



BuzziLight

Mono 220-240V

Product Specification Sheet

Discover all insights on BuzziLight Mono.
Acoustical lighting solutions offering you a
variety of patterns and colors.









www.buzzi.space

Lighting fixture in BuzziFelt

Mirroring the iconic shape of BuzziSpace's BuzziLight, the BuzziLight Mono makes a design statement with just one color of BuzziFelt. This acoustic light houses an LED bulb, offering soft light and soft sound.

Design by Sas Adriaenssens

General

-  Mono
 - BuzziFelt cover
 - Powder coated metal frame
-  Powder coated metal ceiling canopy
 - Fabric power cord
 - Metal cable set
-  220-240V 50/60Hz Class 1
 - E27 fitting
 - Max. 60W
-  IP20 Dry usage
-  Assembled
-  If installing on suspended ceiling, verify load capacity prior to installation.

Certifications

CE / CB

Acoustics



Absorption



Diffusion

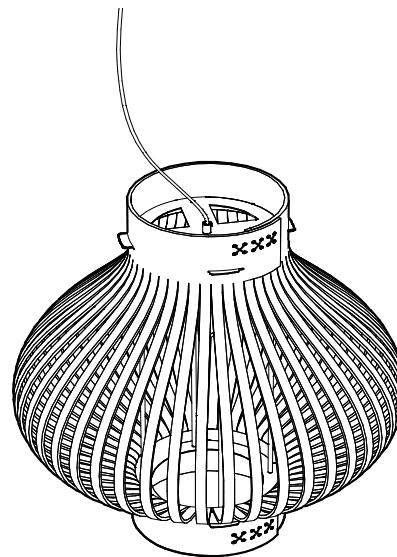
Content

Configurations	3
Technical Components	4
Finishes	5
Dimensions	7
Acoustics	8

Configurations

BuzziLight Mono

- ◆ Mono L
- 🌲 BuzziFelt cover with Mono pattern cut-outs.
- ✂ H 63 cm Ø 65 cm
- ⚖ 3 kg
- Lace: Black | White
- ⋮ Cable set: 2m | 5m, Silver | Black
- Optional: No stitch | Black stitch | White stitch
- Optional: LED bulb E27 5W



Technical Components

Ceiling canopy

Metal powder coated (RAL 9005) ceiling canopy.
Including mounting bracket.
Height: 2,6 cm
Diameter: 12 cm.



Frame | Fitting | Power Cord

Metal powder coated (RAL 9005) frame.
L: H 50 cm Ø 30 cm
Black bakelite E27 fitting
Black fabric power cord (2 x 0,75 mm²)



LED Bulb (optional)

LED Filament tube bulb E27 / 240V / 5W / 2200K
Length 30 cm
Energyclass A++



Finishes

BuzziFelt

Composition 100% Recycled PE.T. Felt, latex backing

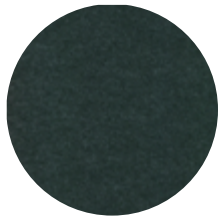
Weight 1.000 g/m2 | 29.49 oz/yd2

Abrasion resistance >7.000 Martindale

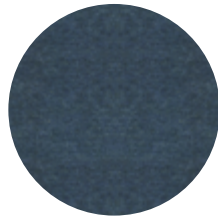
Flammability EU: EN 13501.1 + A1/2009 Class B-s1,d0

USA: ASTM E84 Class A certified

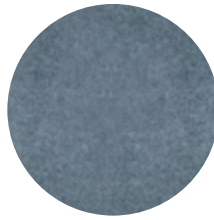
Fastness to light USA 5



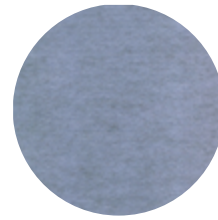
FE-Anthracite 68



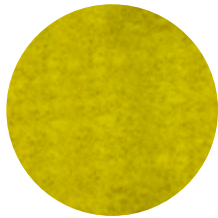
FE-Jeans 75



FE-StoneGrey 67



FE-LightBlue 60



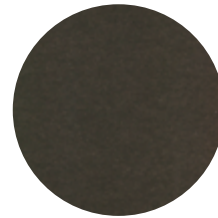
FE-Curry 61



FE-OffWhite 63



FE-Mokka 74



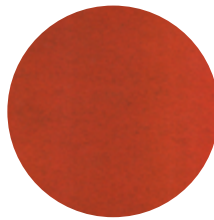
FE-EcoBrown 58



FE-Lime 64



FE-Pink 65



FE-Orange 66



FE-Red 59

Stitch (optional)

No stitch | Black stitch | White stitch



Lace

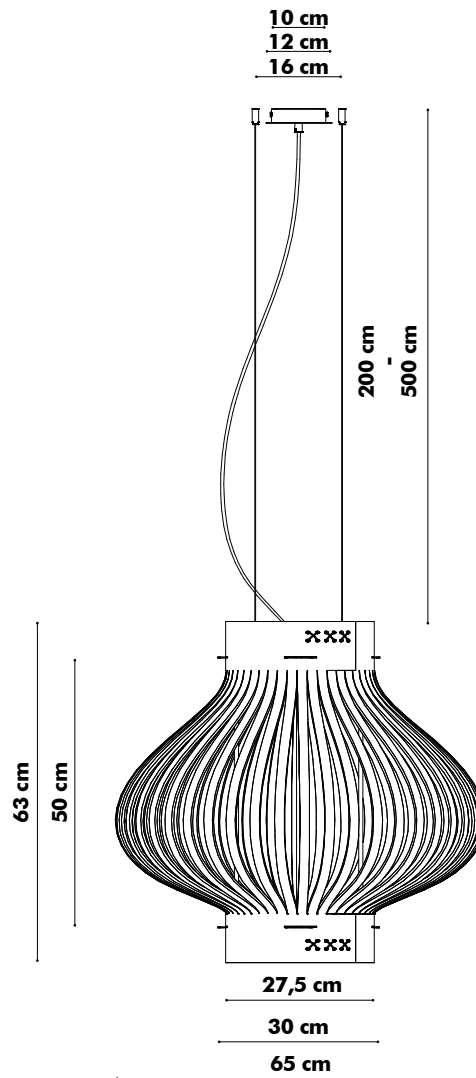
Lace black or white



Dimensions

BuzziLight Mono

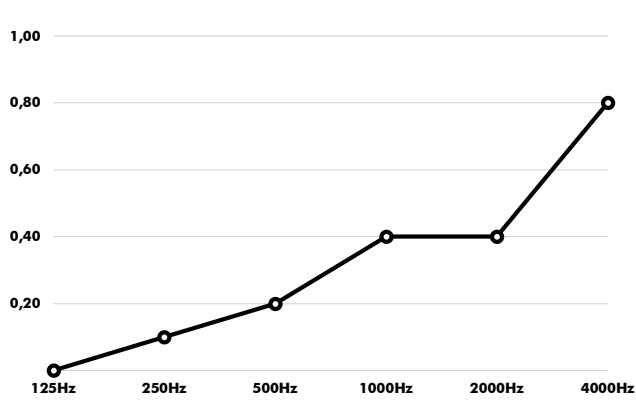
L



Acoustics

BuzziLight Mono

Equivalent sound absorption area in m² per object



Hz	Aeq/m ²
125	0.0
250	0.1
500	0.2
1000	0.4
2000	0.4
4000	0.8